



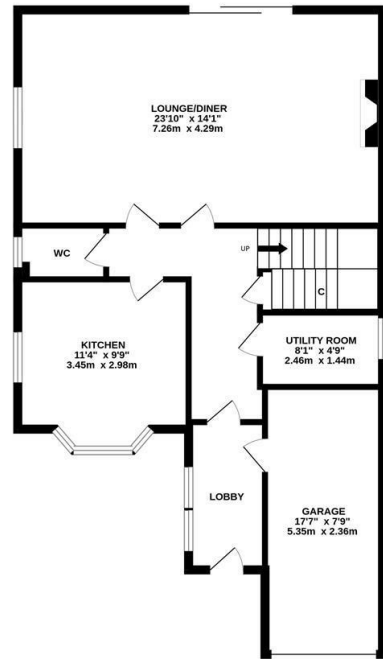
MODERN DETACHED FAMILY HOME with SOUTH FACING REAR GARDENS! Occupying over 1,500 Sq ft, this great detached home is located at Victoria Mews, Jesmond Vale. Victoria Mews, tucked behind Rosebery Crescent, is ideally placed just outside of the city centre and is also within walking distance to Jesmond Dene, the shops and cafés of Jesmond, excellent transport links as well as Newcastle City Centre itself.



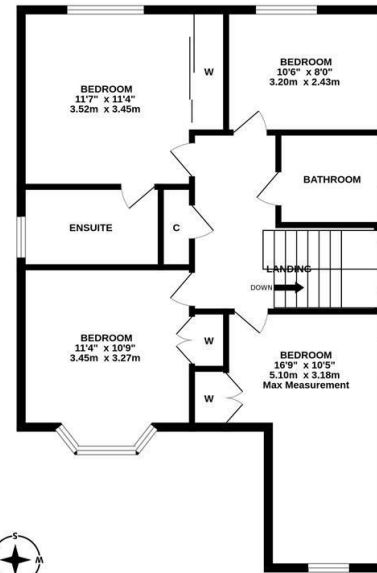
Originally constructed in 1992, the accommodation briefly comprises: entrance lobby through to entrance hall; Open Plan lounge/diner with south facing sliding patio doors to the garden; kitchen/breakfast room with integrated appliances; utility room and cloakroom/WC to the ground floor. The first floor landing with store cupboard boasts four bedrooms, three of which with built-in wardrobes and the master with stylish en-suite shower room and a stylish, fully tiled family bathroom. Externally, a 17ft garage, block-paved driveway providing off street parking for two cars and a delightful south-facing garden laid mainly to lawn with paved patio area, planted borders and fenced boundaries. With a gas central heating system and photovoltaic solar panels providing a guaranteed income for years to come, this great family home simply demands an early internal inspection!

Detached Family Home | 1,527 Sq ft (141.9m2) | Four Bedrooms | Lounge | Dining Room | Kitchen/Breakfast Room | Utility Room | Ground Floor WC | Stylish Bathroom & En-Suite | Garage & Driveway Parking | South Facing Rear Gardens | Great Location | Photovoltaic Solar Panels | GCH | EPC Rating: B | Council Tax Band: F

GROUND FLOOR
812 sq.ft. (75.4 sq.m.) approx.



1ST FLOOR
726 sq.ft. (67.4 sq.m.) approx.



TOTAL FLOOR AREA: 1537 sq.ft. (142.8 sq.m.) approx.
Whilst every attempt has been made to ensure the accuracy of the floorplans contained here, measurements of doors, windows, rooms and any other items are approximate and no responsibility is taken for any error, omission or mis-statement. This plan is for illustrative purposes only and should be used as such by any prospective purchaser. The services, systems and appliances shown have not been tested and no guarantee as to their operability or efficiency can be given.
Made with Metropix ©2020



Offers Over £500,000

IMPORTANT NOTE: These particulars and the descriptions and measurements herein do not constitute representation and whilst every effort has been made to ensure accuracy, this cannot be guaranteed.

